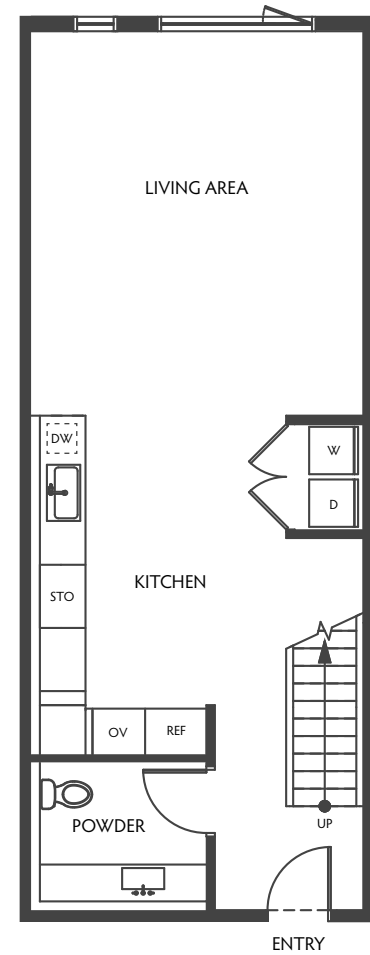


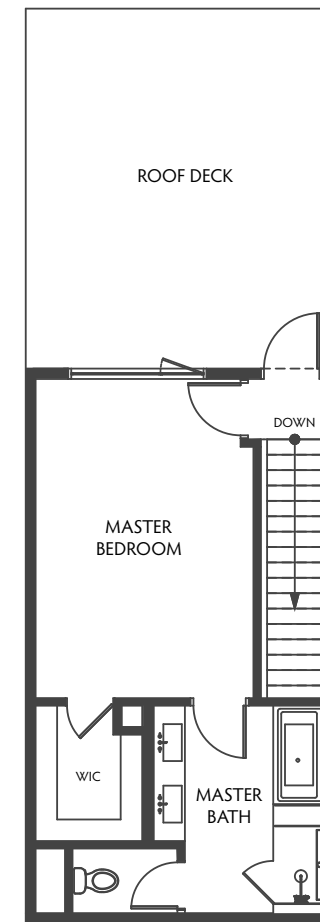
# RESIDENCE 307

TWO-LEVEL TOWNHOME | 1 BEDROOM, 1.5 BATHROOMS | 1,244 SQFT | 331 EXT SQFT

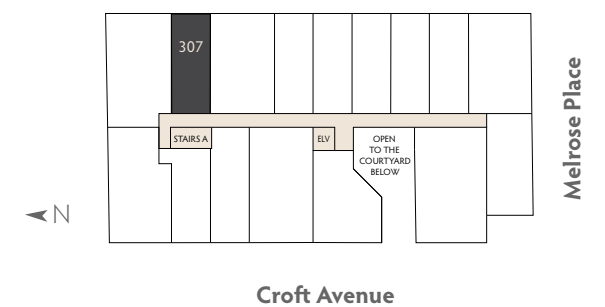
THE ADDISON  
THE MELROSE COLLECTION



THIRD LEVEL



FOURTH LEVEL



724 N. CROFT AVENUE, LOS ANGELES, CA 90069 | THEADDISONLA.COM

@ 2020 etco Homes. Prices and terms subject to change. Square footages are approximate. Builder has the right to change square footage, plans, and pricing without notice. All illustrations are artist's conceptions, are not to scale and are subject to change in actual production. CalDRE license no. 01878688. 🏠