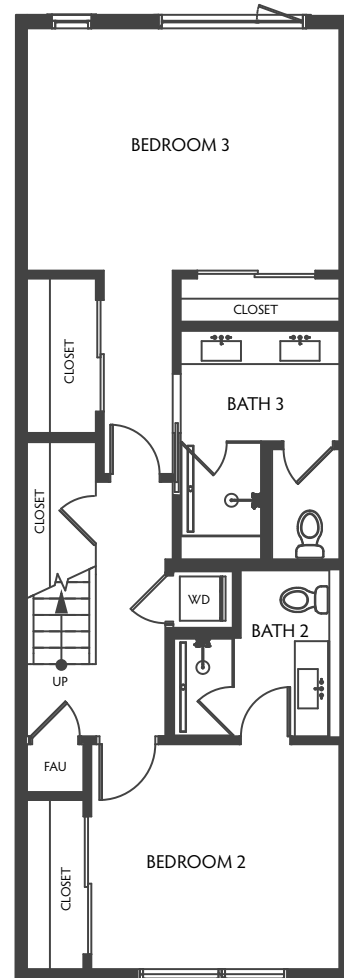


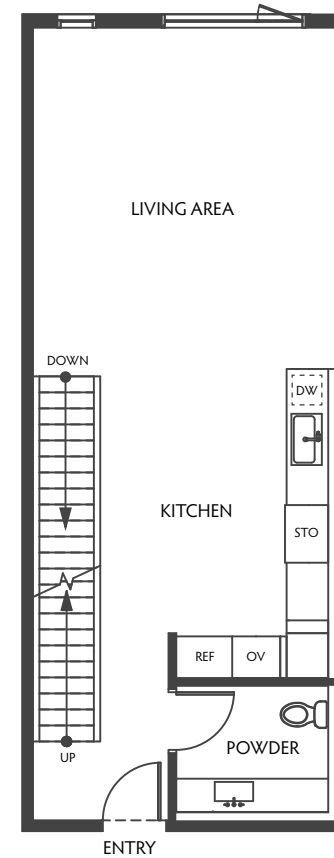
RESIDENCE 311

THREE-LEVEL TOWNHOME | 3 BEDROOMS, 3.5 BATHROOMS | 2,066 SQFT | 323 EXT SQFT

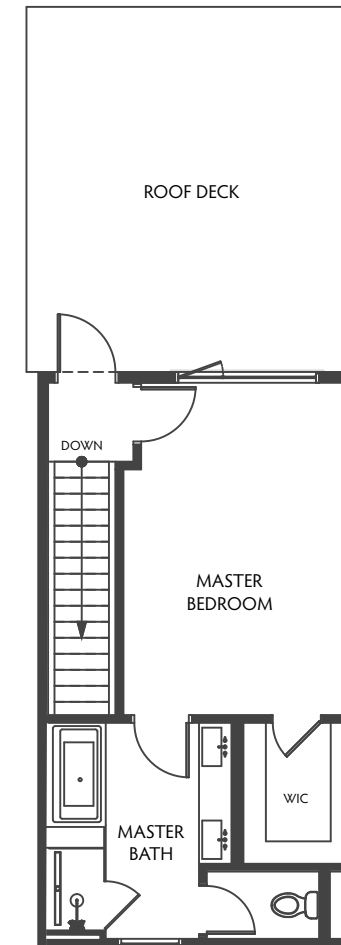
THE ADDISON
THE MELROSE COLLECTION



SECOND LEVEL



THIRD LEVEL



FOURTH LEVEL

724 N. CROFT AVENUE, LOS ANGELES, CA 90069 | THEADDISONLA.COM

@ 2020 etco Homes. Prices and terms subject to change. Square footages are approximate. Builder has the right to change square footage, plans, and pricing without notice. All illustrations are artist's conceptions, are not to scale and are subject to change in actual production. CalDRE license no. 01878688.

