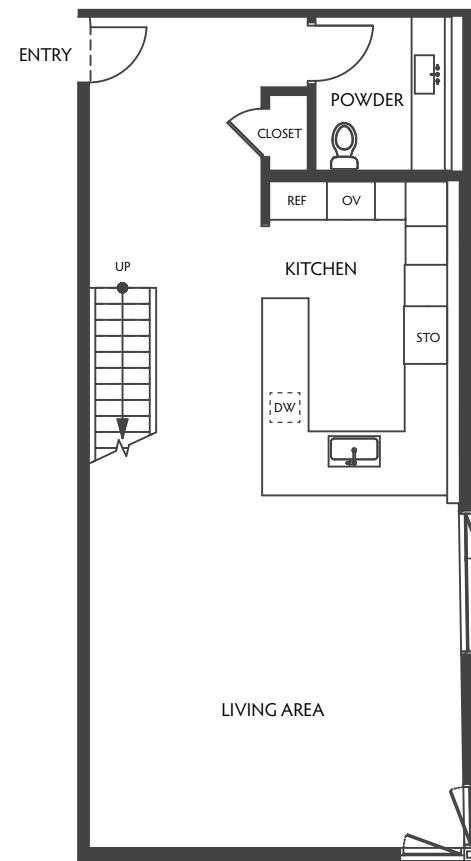


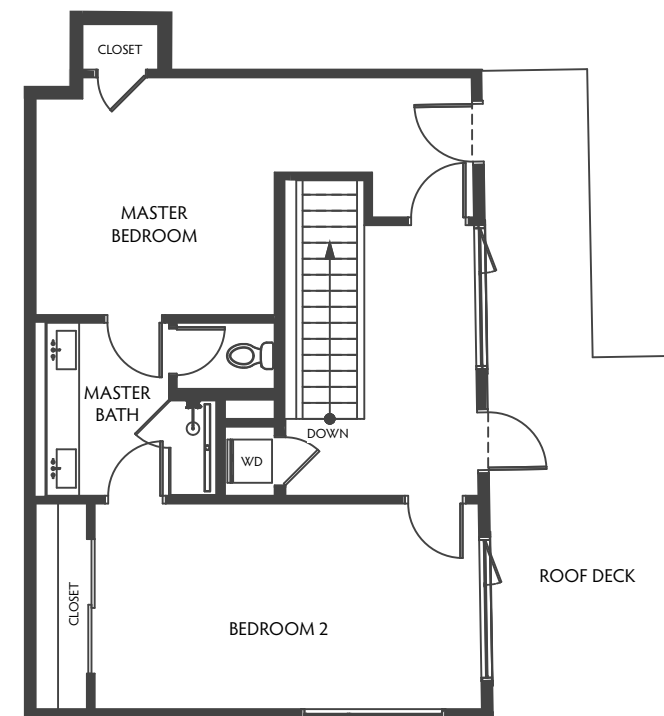
# RESIDENCE 315

TWO-LEVEL TOWNHOME | 2 BED, 1.5 BATHS | 1,748 SQFT | 381 EXT SQFT

THE ADDISON  
THE MELROSE COLLECTION



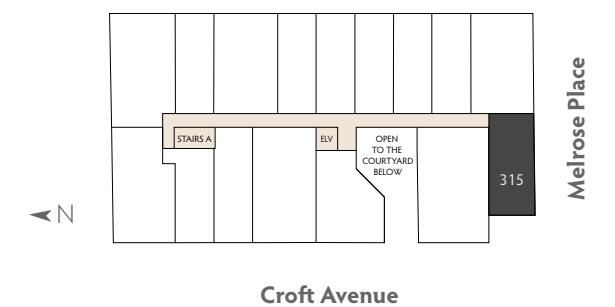
THIRD LEVEL



FOURTH LEVEL

724 N. CROFT AVENUE, LOS ANGELES, CA 90069 | THEADDISONLA.COM

@ 2020 etco Homes. Prices and terms subject to change. Square footages are approximate. Builder has the right to change square footage, plans, and pricing without notice. All illustrations are artist's conceptions, are not to scale and are subject to change in actual production. CalDRE license no. 01878688. 🏠



Melrose Place

Croft Avenue

315